



12a Montagu Court, 27-29 Montagu Square, London W1

An exceptional 2 bedroom 2 bathroom apartment (1,160sqft/108sqm) for sale overlooking Montagu Square gardens. The apartment is exceptionally bright, with a dual aspect and opportunity to create 3 bedrooms.

Reception Room : Dining Room : Kitchen : Master Bedroom : Second Bedroom : 2 Bathrooms : Lift :  
Porter : Private : Garden Square : EPC Rating TBC

**£2,650,000 Subject To Contract**

Leasehold; approx 994 years remaining, plus share of Freehold





## **Terms and Conditions**

### **Price**

£2,650,000 Subject To Contract

### **Tenure**

Leasehold; approx 994 years remaining, plus share of Freehold

# Montagu Court, Montagu Square, W1

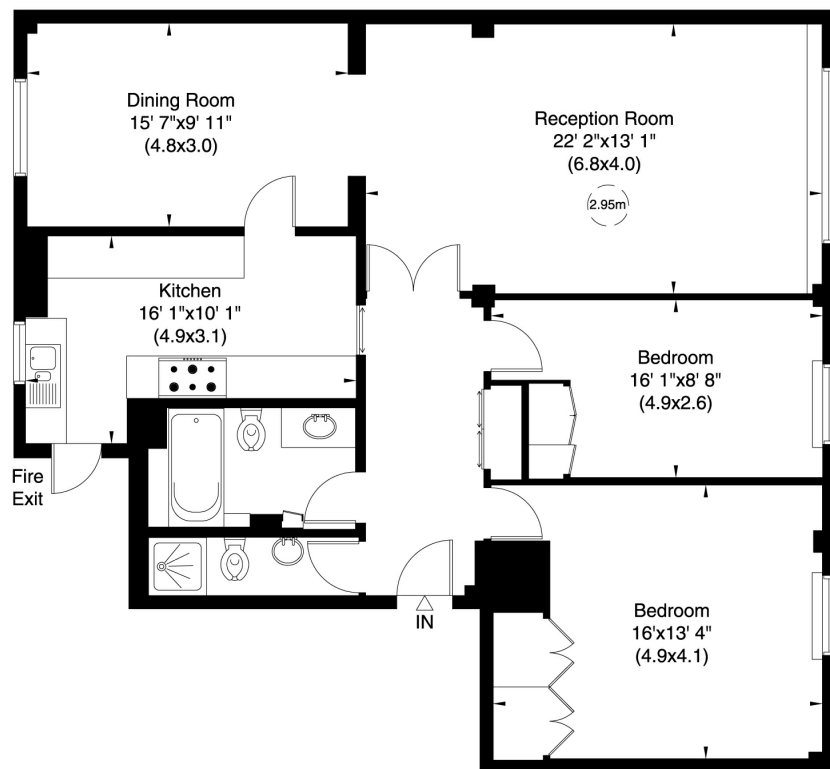
Gross internal area (approx.)

108 Sq m (1160 Sq ft)

For identification only, Not to Scale



Floor Plan by **capital group** 020 8671 7722



Third Floor

Not to scale, for guidance only and must not be relied upon as a statement of fact. All measurements and areas are approximate only (and have been prepared in accordance with the current edition of the RICS Code of Measuring Practice).